



CorePro LED PLC 2P



CorePro LED PLC 5.9W 830 2P G24d-1

CorePro LED PLC 2P integrates a LED light source into a traditional fluorescent form factor. This product is the ideal solution for uplamping in general lighting applications: it meets basic lighting requirements, offers significant energy savings, and is environmentally friendly.

Product data

General Information	
Cap-Base	G24d-1
Nominal lifetime	30,000 hour(s)
Switching Cycle	50,000
Lighting Technology	LED
Flux measurement reference	Sphere
Light Technical	
Color Code	830 [CCT of 3000K]
Beam Angle (Nom)	120 degree(s)
Luminous Flux	600 lm
Luminous Efficacy (rated) (Nom)	101 lm/W
Color Designation	White (WH)
Correlated Color Temperature (Nom)	3000 K
Color Consistency	<6
Color rendering index (CRI)	82
LLMF At End Of Nominal Lifetime (Nom)	70 %
Flickering value (PstLM) - Flickering value as per EN 61000-3-3	1
Stroboscopic effect visibility measure (SVM)	0.4
Photobiological safety according to EN 62471	RG1

Operating and Electrical	
Input Frequency	50 to 60 Hz
Power Consumption	5.9 W
Lamp Current (Nom)	31 mA
Starting Time (Nom)	0.5 s
Warm-up time to 60% light	0.5 s
Power Factor (Fraction)	0.9
Voltage (Nom)	220-240 V
LED alternative to fluorescent lamp power	13 W
Inrush current at mains	2.78
Max. lamp no. on MCB B type 10A - Mains	276
Max. lamp no. on MCB B type 10A – EM ballast without Compensation Capacitor.	306
Max. lamp no. on MCB B type 10A – EM ballast with Compensation Capacitor.	-
Max. lamp no. on MCB B type 16A - Mains	442
Max. lamp no. on MCB B type 16A – EM ballast without Compensation Capacitor.	490
Max. lamp no. on MCB B type 16A – EM ballast with Compensation Capacitor.	-
Ballast Compatibility	EM/Mains

CorePro LED PLC 2P

Temperature

Ambient temperature range	-20 to +35 °C
T-Case Maximum (Nom)	75 °C

Controls and Dimming

Dimmable	No
----------	----

Mechanical and Housing

Bulb Finish	Frosted
Bulb Material	Plastic
Product Length	100 mm
Bulb Shape	PL-C

Approval and Application

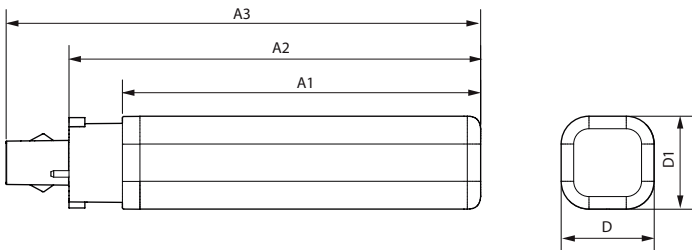
Energy Efficiency Class	F
Energy Saving Product	Yes
Approval Marks	RoHS compliance CE marking KEMA Keur certificate
Energy Consumption kWh/1000 h	6 kWh

EPREL Registration Number	1820629
CE mark	Yes
EU RoHS compliant	Yes

Product Data

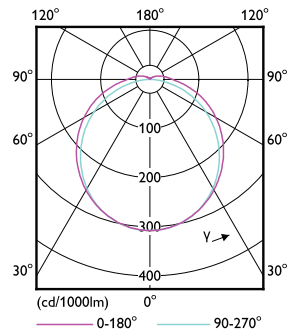
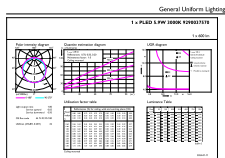
Order product name	CorePro LED PLC 5.9W 830 2P G24d-1
Full product name	CorePro LED PLC 5.9W 830 2P G24d-1
Full product code	872016928750100
Order code	929003757002
Material Nr. (12NC)	929003757002
Numerator - Quantity Per Pack	1
Net Weight (Piece)	0.070 kg
EAN/UPC - Product/Case	8720169287501
Numerator - Packs per outer box	10
EAN/UPC - Case	8720169287518

Dimensional drawing



Product	D1	D2	A1	A2	A3
CorePro LED PLC 5.9W 830 2P G24d-1	34 mm		95 mm	115 mm	138 mm

Photometric data

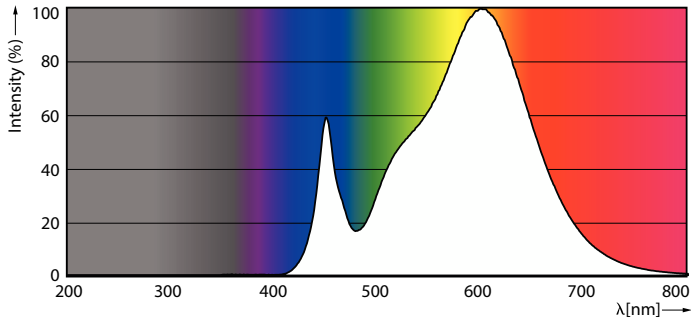


General uniform lighting - CorePro LED PLC 5.9W 830 2P G24d-1

Light Distribution Diagram - CorePro LED PLC 5.9W 830 2P G24d-1

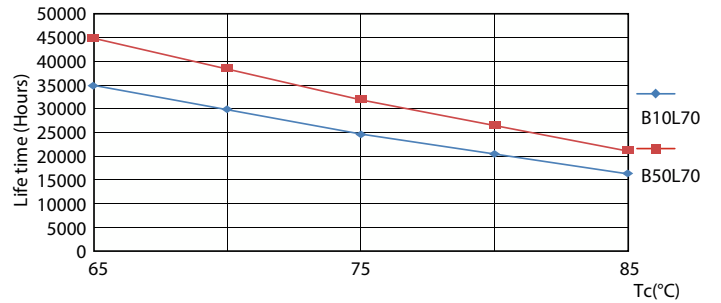
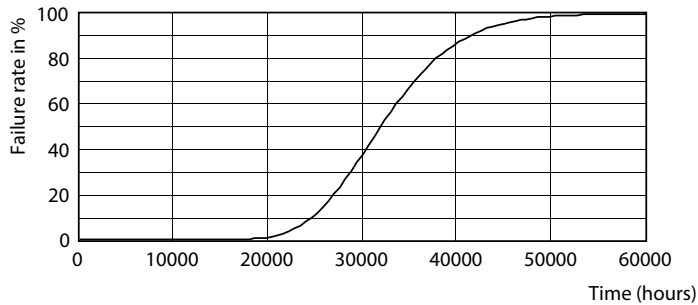
CorePro LED PLC 2P

Photometric data

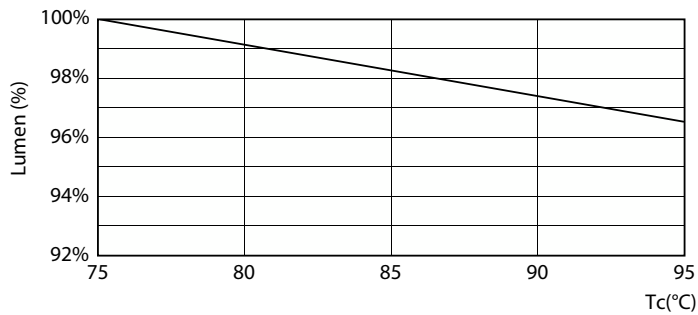


Spectral Power Distribution Colour - CorePro LED PLC 5.9W 830 2P G24d-1

Lifetime

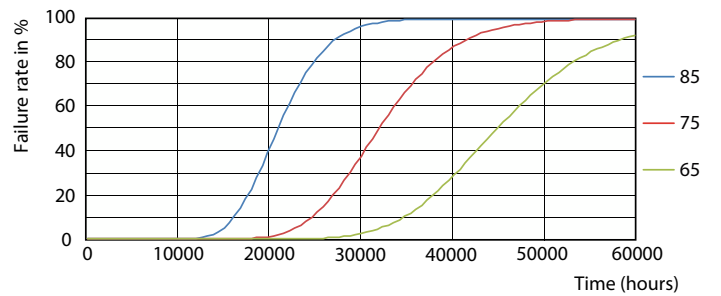


Life Expectancy Diagram



Lumen Maintenance Diagram - CorePro LED PLC 5.9W 830 2P G24d-1

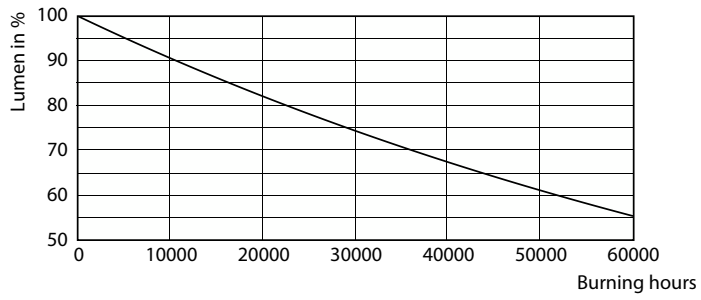
LifetimeVsTc



FailureRate

CorePro LED PLC 2P

Lifetime



Lumen Maintenance Diagram - CorePro LED PLC 5.9W 830 2P G24d-1

