



MASTER LEDtube InstantFit HF T8



MAS LEDtube HF 1200mm UO 16W840 T8

Philips MASTER LEDtube InstantFit T8 integrates a LED light source into a traditional fluorescent form factor. Its unique design creates a perfectly uniform visual appearance which cannot be distinguished from traditional fluorescent. Philips MASTER LEDtube InstantFit T8 is the ideal solution for customers who have higher light requirements and want to maximize value over lifetime. Full energy savings & longer lifetime result in attractive payback times and TCO benefits.

Warnings and Safety

- NOTES: The overall energy efficiency and light distribution of any installation that uses these lamps are determined by the design of the installation.

Product data

| General Information | | Color rendering index (CRI) | |
|------------------------------------|--------------------|---|----------------|
| Cap-Base | G13 ROT | | 80 |
| Nominal lifetime | 75,000 hour(s) | LLMF At End Of Nominal Lifetime (Nom) | 70 % |
| Switching Cycle | 50,000 | Flickering value (PstLM) - Flickering value as per EN 61000-3-3 | 0.5 |
| Lighting Technology | LED | Stroboscopic effect visibility measure (SVM) | 0.2 |
| Flux measurement reference | Sphere | Photobiological safety according to EN 62471 | RG0 |
| Light Technical | | Operating and Electrical | |
| Color Code | 840 [CCT of 4000K] | Line Frequency | 20000-75000 Hz |
| Beam Angle (Nom) | 160 degree(s) | Input Frequency | 20000-75000 Hz |
| Luminous Flux | 2,500 lm | Power Consumption | 16 W |
| Luminous Efficacy (rated) (Nom) | 156 lm/W | Lamp Current (Max) | 750 mA |
| Color Designation | Cool White (CW) | Lamp Current (Min) | 300 mA |
| Correlated Color Temperature (Nom) | 4000 K | Starting Time (Nom) | 0.5 s |
| Color Consistency | <6 | Warm-up time to 60% light | 0.5 s |

MASTER LEDtube InstantFit HF T8

| | |
|--|---------|
| Power Factor (Fraction) | 0.9 |
| Voltage (Nom) | 30-80 V |
| LED alternative to fluorescent lamp power | 36 W |
| Inrush current at mains | - |
| Max. lamp no. on MCB B type 10A – Mains | - |
| Max. lamp no. on MCB B type 10A – EM ballast without Compensation Capacitor. | - |
| Max. lamp no. on MCB B type 10A – EM ballast with Compensation Capacitor. | - |
| Max. lamp no. on MCB B type 16A – Mains | - |
| Max. lamp no. on MCB B type 16A – EM ballast without Compensation Capacitor. | - |
| Max. lamp no. on MCB B type 16A – EM ballast with Compensation Capacitor. | - |
| Ballast Compatibility | HF |

Temperature

| | |
|---------------------------|-----------------|
| Ambient temperature range | -20 °C to 45 °C |
| T-Case Maximum (Nom) | 55 °C |

Controls and Dimming

| | |
|----------|-----------------------------------|
| Dimmable | Yes - Check ballast compatibility |
|----------|-----------------------------------|

Mechanical and Housing

| | |
|----------------|----------|
| Bulb Finish | Frosted |
| Bulb Material | Plastic |
| Product Length | 1,200 mm |

| | |
|------------|----|
| Bulb Shape | T8 |
|------------|----|

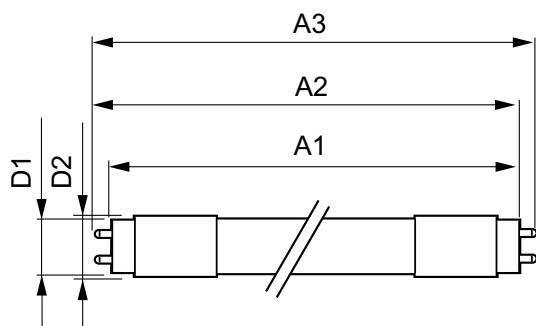
Approval and Application

| | |
|-------------------------------|--|
| Energy Efficiency Class | D |
| Energy Saving Product | Yes |
| Approval Marks | RoHS compliance CE marking KEMA Keur certificate ENEC certificate |
| Energy Consumption kWh/1000 h | 16 kWh |
| EPREL Registration Number | 1165514 |
| CE mark | Yes |
| EU RoHS compliant | Yes |

Product Data

| | |
|---------------------------------|---------------------------------------|
| Order product name | MAS LEDtube HF 1200mm UO 16W840 T8 |
| Full product name | MAS LEDtube HF 1200mm UO 16W840 T8 |
| Full product code | 871951446696800 |
| Order code | 929003554102 |
| Material Nr. (12NC) | 929003554102 |
| Numerator - Quantity Per Pack | 1 |
| Net Weight (Piece) | 0.230 kg |
| EAN/UPC - Product/Case | 8719514466968 |
| Numerator - Packs per outer box | 20 |
| EAN/UPC - Case | 8719514466975 |

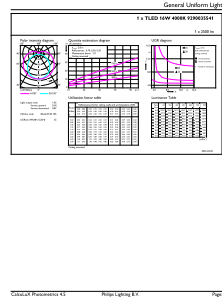
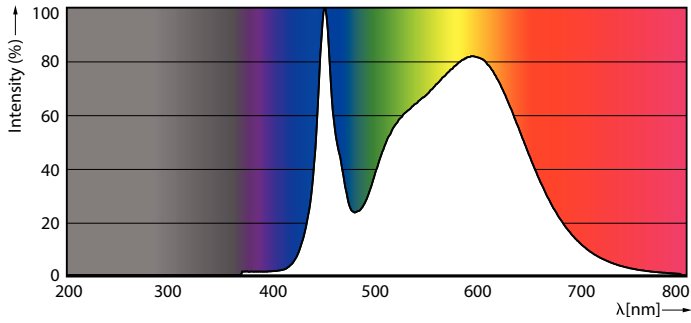
Dimensional drawing



| Product | D1 | D2 | A1 | A2 | A3 |
|---------------------------------------|---------|-------|------------|------------|------------|
| MAS LEDtube HF 1200mm UO 16W840 T8 | 25.8 mm | 28 mm | 1,198.2 mm | 1,205.3 mm | 1,212.4 mm |

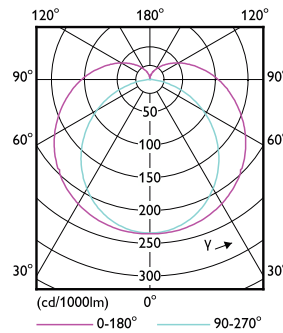
MASTER LEDtube InstantFit HF T8

Photometric data



Spectral Power Distribution Colour - MAS LEDtube HF 1200mm UO 16W840 T8

General uniform lighting - MAS LEDtube HF 1200mm UO 16W840 T8

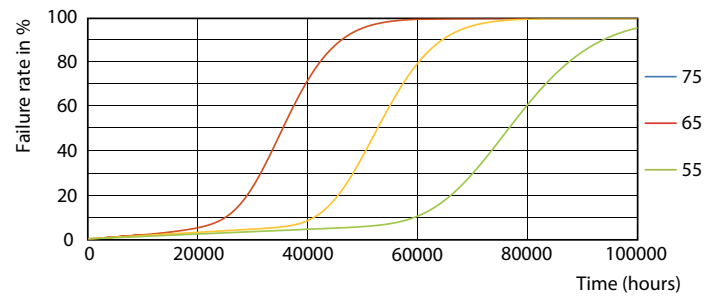


Light Distribution Diagram - MAS LEDtube HF 1200mm UO 16W840 T8

Lifetime



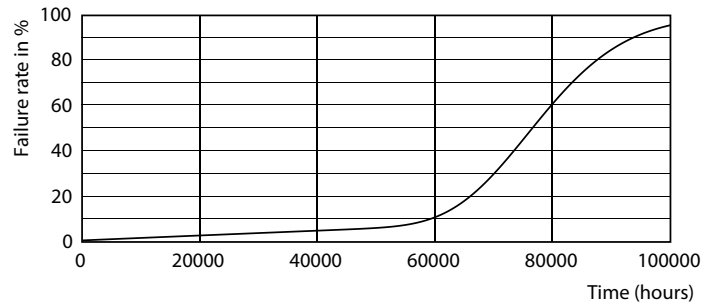
Lumen Maintenance Diagram - MAS LEDtube HF 1200mm UO 16W840 T8



FailureRate

MASTER LEDtube InstantFit HF T8

Lifetime



Lumen Maintenance Diagram - MAS LEDtube HF 1200mm UO 16W840 T8

Life Expectancy Diagram



LifetimeVsTc

