



CorePro LED PLS



CorePro LED PLS 5W 840 2P G23

The Philips CorePro LED PLS integrates a LED light source into a traditional fluorescent form factor. This product is the ideal solution for uplampping in general lighting applications: it meets basic lighting requirements, offers significant energy savings, and is environment-friendly.

Product data

General Information	
Cap-Base	G23 [G23]
Nominal lifetime	30,000 hour(s)
Switching Cycle	50,000
Lighting Technology	LED
Flux measurement reference	Sphere
CE mark	Yes
EU RoHS compliant	Yes
Light Technical	
Color Code	840 [CCT of 4000K]
Beam Angle (Nom)	120 degree(s)
Luminous Flux	550 lm
Color Designation	Cool White (CW)
Correlated Color Temperature (Nom)	4000 K
Luminous Efficacy (rated) (Nom)	110.00 lm/W
Color Consistency	<6
Color rendering index (CRI)	82
LLMF At End Of Nominal Lifetime (Nom)	70 %
Photobiological safety according to EN 62471 RGO	
Operating and Electrical	
Line Frequency	50 to 60 Hz

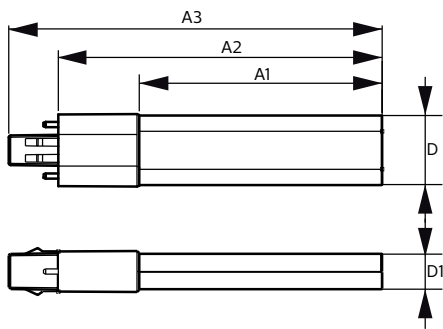
Input Frequency	50 to 60 Hz
Power Consumption	5 W
Starting Time (Nom)	0.5 s
Warm-up time to 60% light	0.5 s
Power Factor (Fraction)	0.9
Voltage (Nom)	220-240 V
LED alternative to fluorescent lamp power	11 W
Temperature	
Ambient temperature range	-20 °C to 45 °C
T-Case Maximum (Nom)	83 °C
Controls and Dimming	
Dimmable	No
Mechanical and Housing	
Bulb Material	Plastic
Product Length	170 mm
Bulb Shape	PL-S
Approval and Application	
Energy Efficiency Class	F
Energy Saving Product	Yes

CorePro LED PLS

Approval Marks	TUV CE marking RoHS compliance KEMA Keur certificate
Energy Consumption kWh/1000 h	5 kWh
EPREL Registration Number	403567
Product Data	
Order product name	CorePro LED PLS 5W 840 2P G23
Full product name	CorePro LED PLS 5W 840 2P G23
Full product code	871869959668200

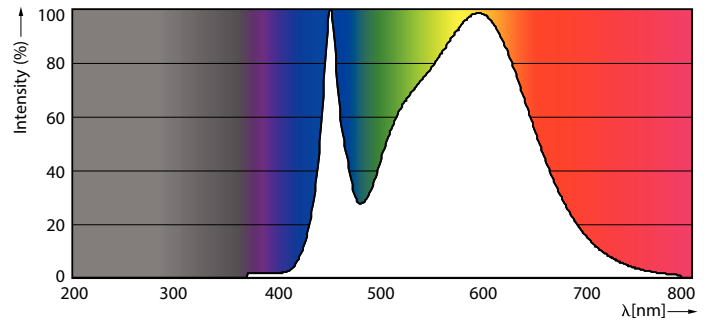
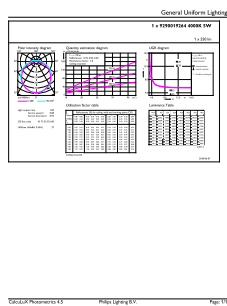
Order code	929001926402
Material Nr. (12NC)	929001926402
Numerator - Quantity Per Pack	1
EAN/UPC - Product/Case	8718699596682
Numerator - Packs per outer box	20
EAN/UPC - Case	8718699596699

Dimensional drawing



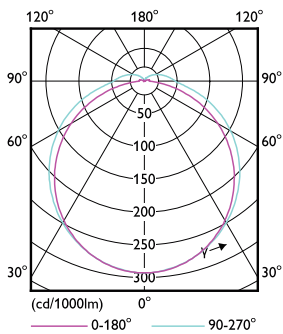
Product	D	D1	A1	A2	A3
CorePro LED PLS 5W 840 2P G23	31.1 mm	15.8 mm	108 mm	144 mm	166 mm

Photometric data



General uniform lighting - CorePro LED PLS 5W 840 2P G23

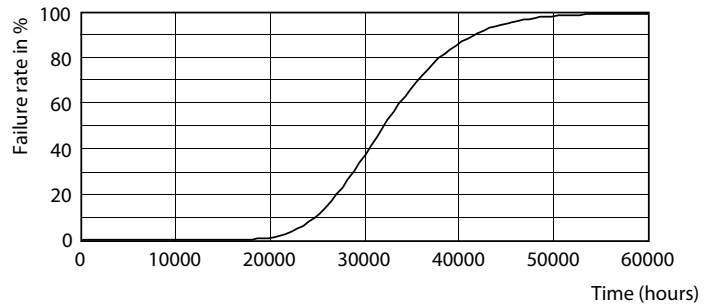
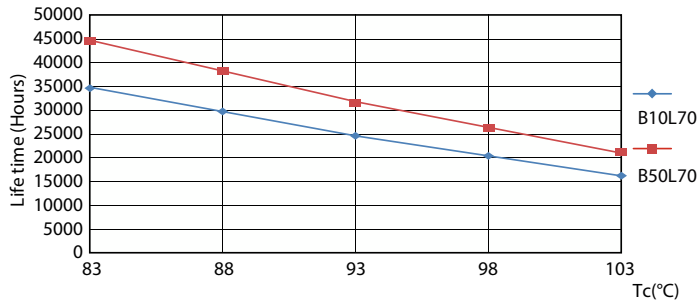
Spectral Power Distribution Colour - CorePro LED PLS 5W 840 2P G23



Light Distribution Diagram - CorePro LED PLS 5W 840 2P G23

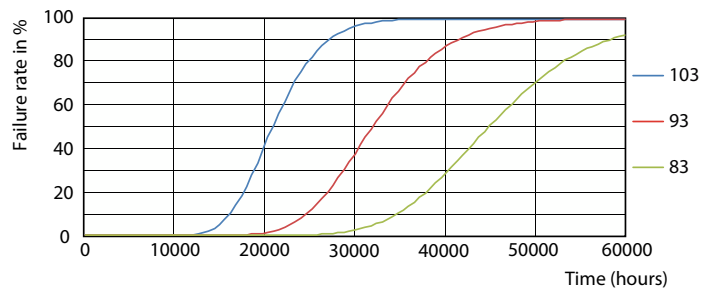
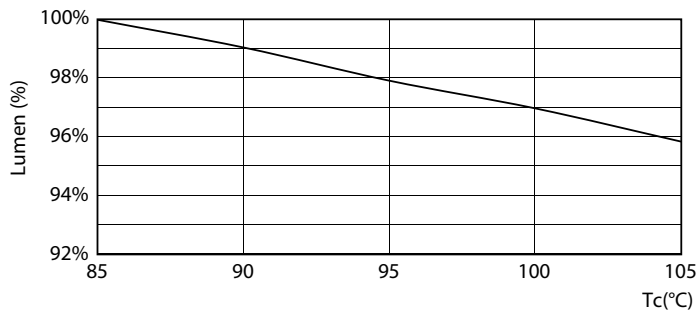
CorePro LED PLS

Lifetime



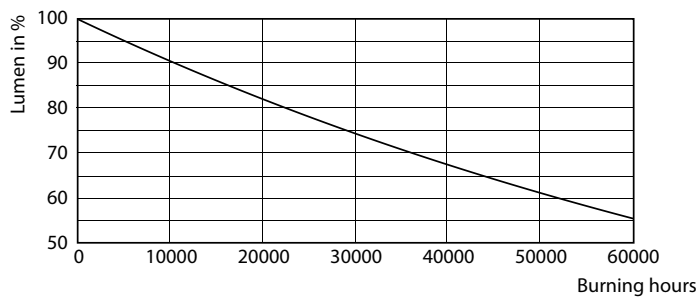
Life Expectancy Diagram - CorePro LED PLS 5W 840 2P G23

Life Expectancy Diagram - CorePro LED PLS 5W 840 2P G23



Lumen Maintenance Diagram - CorePro LED PLS 5W 840 2P G23

Life Expectancy Diagram - CorePro LED PLS 5W 840 2P G23



Lumen Maintenance Diagram - CorePro LED PLS 5W 840 2P G23

