



MHN-TD

MHN-TD 70W/730 RX7s 1CT

Double-ended quartz Metal-halide lamp

Product data

• General Characteristics

Cap-Base	RX7s
Cap-Base Information	na [-]
Bulb	TD
Bulb Finish	Clear
Operating Position	p45 [Parallel +/-45D or Horizontal(HOR)]
Life to 5% failures	5000 hr
Life to 20% failures	7000 hr
Life to 50% failures	9000 hr

• Light Technical Characteristics

Color Code	730 [CCT of 3000K]
Color Rendering Index	70 Ra8
Color Designation (text)	Warm White
Color Temperature	3000 K
Chromaticity Coordinate X	434 -
Chromaticity Coordinate Y	400 -
Luminous Flux Lamp EM	6000 Lm
Luminous Efficacy Lamp EM	80 Lm/W
Lumen Maintenance 2000h	65 %
Lumen Maintenance 5000h	60 %
Lumen Maintenance 10000h	55 %
Luminance Average EM	1600 cd/cm ²

• Electrical Characteristics

Lamp Wattage	70 W
Lamp Wattage EM	75 W
Lamp Voltage	90 V
Lamp Current EM	0.98 A
Ignition Peak Voltage	1800 (min) V
Dimmable	No

• Environmental Characteristics

Mercury (Hg) Content	13.4 mg
----------------------	---------

• Luminaire Design Requirements

Pinch Temperature	280 (max) C
Bulb Temperature	500 (max) C

• Product Dimensions

Insertion Length B	114.2 (max) mm
Overall Length C	117.6 (max) mm
Diameter D	19.5 (max) mm
Light Center Length L	57.0 mm
Arc Length O	7.7 mm
Light Center Length L [inch]	2.24 in
Overall Length C [inch]	4.63 (max) in
Diameter D [inch]	0.75 in

• Product Data

Order code	928482400092
Full product code	928482400092
Full product name	MHN-TD 70W/730 RX7s 1CT

PHILIPS

sense and simplicity

MHN-TD

Order product name MHN-TD 70W/730 RX7s 1CT/12
Pieces per pack 1
Packing configuration 12
Packs per outerbox 12
Bar code on pack - EAN1 8718291215301

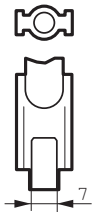
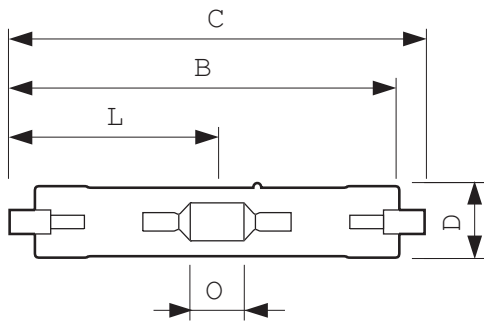
Bar code on outerbox - EAN3 8718291215318
Logistic code(s) - 12NC 928482400092
Net weight per piece 0.028 kg

Warnings and Safety

- Use only in totally enclosed luminaire, even during testing (IEC61167, IEC 62035, IEC60598)

- The luminaire must be able to contain hot lamp parts if the lamp ruptures
- Control gear must include end-of-life protection (IEC61167, IEC 62035)

Dimensional drawing

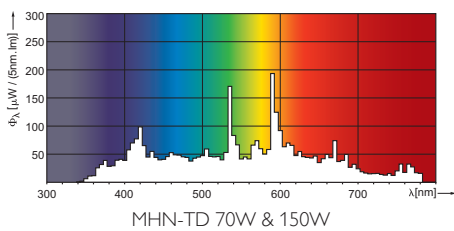


RX7s

MHN-TD, RX7s

Product	C (Max)	D (Max)	O (Norm)
MHN-TD 70W/730 RX7s	117.6	19.5	7.7

Photometric data





© 2012 Koninklijke Philips Electronics N.V.
All rights reserved.

Specifications are subject to change without notice. Trademarks are the property of Koninklijke Philips Electronics N.V. or their respective owners.

www.philips.com/lighting

2012, August 4
data subject to change