



# MHN-TD

MHN-TD 150W/730 RX7s 1CT

Double-envelope, single- or double-ended Metal halide lamps

## Benefits

### • General Characteristics

Cap-Base	RX7s
Cap-Base Information	na [-]
Bulb	TD
Bulb Finish	Clear
Burning Position	p45 [Parallel +/-45D or Horizontal(HOR)]
Life to 5% failures	5000 hr
Life to 20% failures	8000 hr
Life to 50% failures	10500 hr

### • Light Technical Characteristics

Colour Code	730 [CCT of 3000K]
Colour Rendering Index	70 Ra8
Colour Designation	Warm white
Colour Temperature	3000 K
Lamp Luminous Flux EM	13800 Lm
Lamp Luminous Efficacy EM	87 Lm/W
Lumen Maintenance 2000h	75 %
Lumen Maintenance 5000h	65 %
Lumen Maintenance 10000h	60 %
Average Luminance EM	1200 cd/cm2
Chromaticity Coordinate X	434 -
Chromaticity Coordinate Y	400 -

### • Electrical Characteristics

Lamp Wattage	150 W
Lamp Wattage EM 25°C, Nominal	150.0 W
Lamp Wattage EM 25°C, Rated	150.0 W
Lamp Voltage	96 V
Lamp Current EM	1.8 A
Ignition Peak Voltage	3500 (min) V
Dimmable	no

### • Environmental Characteristics

Energy Efficiency Label (EEL)	A+
Mercury (Hg) Content	12.4 mg
Energy consumption kWh/1000h	165 kWh

### • Luminaire Design Requirements

Pinch Temperature	280 (max) C
Bulb Temperature	650 (max) C

### • Product Dimensions

Insertion Length B	132.0 (max) mm
Overall Length C	135.4 (max) mm
Diameter D	23.0 (max) mm
Light Center Length L	66.0 mm
Arc Length O	17.8 mm
Light Center Length L [inch]	2.60 in
Overall Length C [inch]	5.33 (max) in

**PHILIPS**

# MHN-TD

Diameter D [inch] 0.89 in

Packs per outerbox 12  
 Bar code on pack - EAN1 8718291215349  
 Bar code on outerbox - EAN3 8718291215356  
 Logistic code(s) - 12NC 928482500092  
 Net weight per piece 28.000 gr

## • Product Data

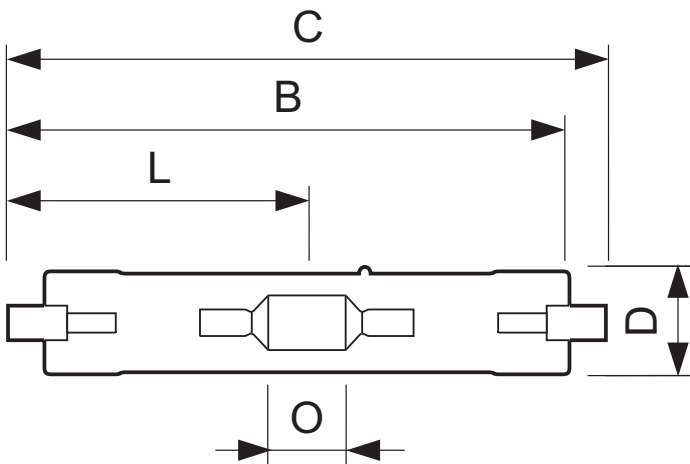
Order code 928482500092  
 Full product name MHN-TD 150W/730 RX7s 1CT  
 Order product name MHN-TD 150W/730 RX7s 1CT/12  
 Pieces per pack 1  
 Packing configuration 12

## Warnings and Safety

- Use only in totally enclosed luminaire, even during testing (IEC61167, IEC 62035, IEC60598)

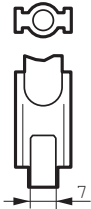
- The luminaire must be able to contain hot lamp parts if the lamp ruptures
- Control gear must include end-of-life protection (IEC61167, IEC 62035)

## Dimensional drawing



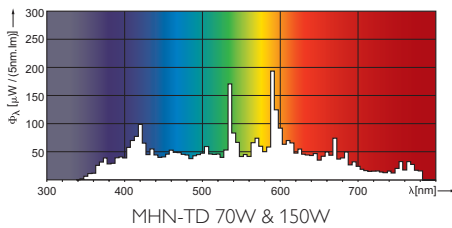
### MHN-TD 150W/730 RX7s 1CT

Product	C (Max)	D (Max)	O (Norm)
MHN-TD 150W/730 RX7s	135.4	23.0	17.8



RX7s

## Photometric data





© 2013 Koninklijke Philips N.V. (Royal Philips)  
All rights reserved.

Specifications are subject to change without notice. Trademarks are the property of Koninklijke Philips N.V. (Royal Philips) or their respective owners.

[www.philips.com/lighting](http://www.philips.com/lighting)

2013, September 12  
data subject to change