

Cost-efficient and environment-friendly exit sign luminaire

EATON

Powering Business Worldwide





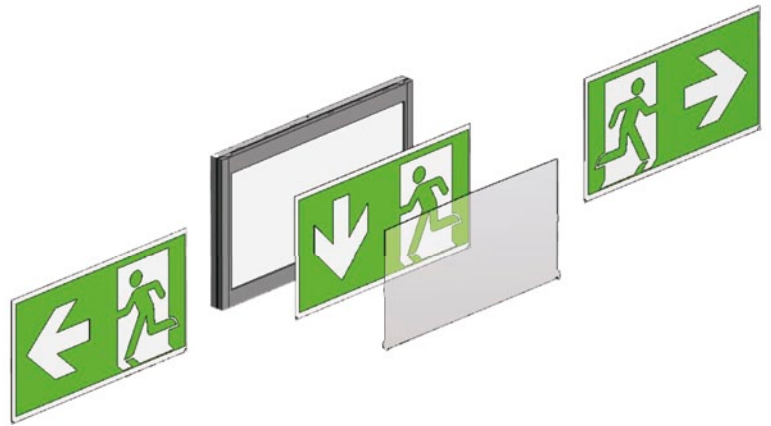
- 1 LED Lightguide technology**
- Uniform brightness acc. to EN 1838
 - Low energy requirements
 - LEDs for increased safety with 50,000 h service life

- 2 Automatic test electronics**
- Fully automatic function test (weekly) or duration test (every 6 months) for low inspection efforts
 - Universal use: For maintained mode, non-maintained mode and switched mode via L' input

- 3 Display and test unit**
- Testing button for manual triggering of function test and duration test
 - Simple fault analysis and status information via display with bicolor LED

- 4 Optimised connection technology**
- Spacious insertion areas
 - Equipped for through-wiring of mains cable via double terminals and 2 cable infeeds
 - For easy installation

- 5 Innovative Lilon technology**
- Large capacity with small construction size for compact luminaire design
 - Only 1 version for 1 h, 2 h and 3 h emergency lighting operation eases replacement purchase
 - Simple replacement via polarity reversal-protected plug-in contacts and snap mounting



Equipped with snap-in pictogram set for universal application



LEDs for increased safety

Longevity, instant start-up, high efficiency and small construction size are the features that make LEDs especially suitable for emergency and safety lighting. But precise matching along with low temperatures and low operating current guarantees high luminous efficacy with maximum service life.

Lightguide technology for optimal illumination

The highly developed Lightguide technology converts the high point-sourced luminance of the LED into an illuminated surface with absolutely homogeneous brightness. As such the exit sign always remains easily recognisable even with poor visibility conditions.

Lithium ion battery technology

Lithium ion batteries with identical capacity require much less space than NiCd or NiMh cells. This leaves more space for compact designs and cable routing.

The so-called memory effect familiar with NiCd and NiMh cells is irrelevant with lithium ion cells.

Permanent safety

Capacity losses from ageing have been considered by corresponding dimensioning of the cells.

A multiple protective circuit integrated in the battery ensures safe operation and high reliability.

NiCd and NiMh batteries have a significantly higher self-discharge and are therefore permanently charged. This is no longer necessary with the GuideLed AT luminaires, saving additional energy costs.



- Low spacial requirement
- No memory effect
- Environmentally friendly

It's not only our pictograms that are green

The new lithium ion batteries are completely devoid of toxic heavy metals such as lead and cadmium.

In addition due to low self-charging, less energy is required for recharging.

In combination with the efficient LED Light guide technology, electricity consumption of a GuideLed exit sign is up to 60 % less than comparable self-contained luminaires with fluorescent lamps.



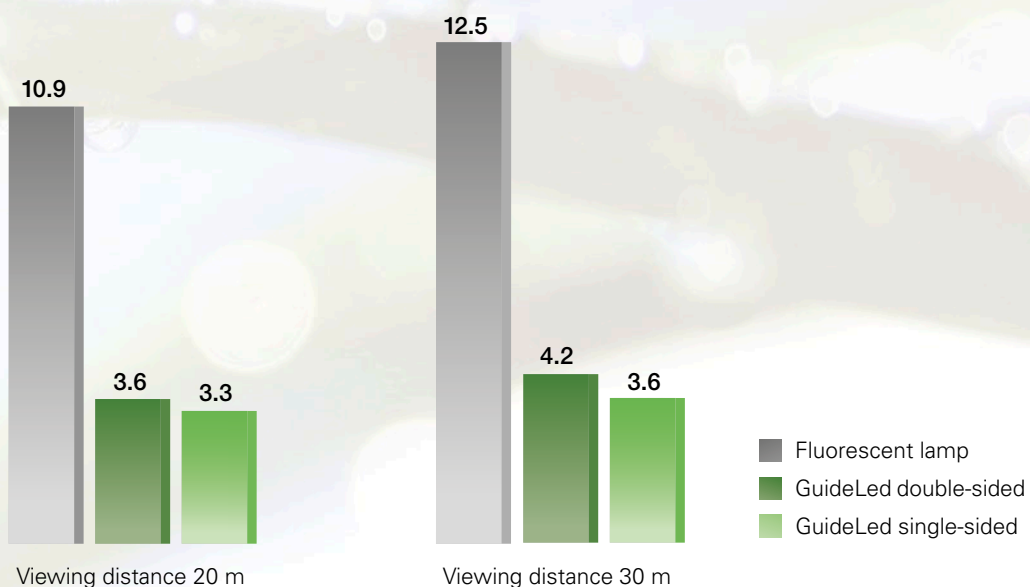
Safely saving on maintenance costs

Fluorescent lamps in safety lighting have typical service lives that mean at least one round of relamping yearly according to daily operational times.

Effort for maintenance is significantly reduced due to the high LED service life of approximately 50,000 hours.

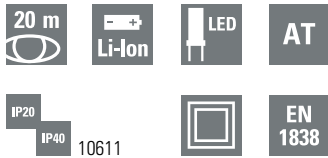


Comparison of the system effective power P_{sys} in watts with mains operation



GuideLed AT

Exit sign luminaire



GuideLed 10611, 10621, 10625 AT

- LED self contained luminaire with automatic test for reduced inspection effort
- Universal use for maintained and non-maintained operation and for 1 h, 2 h or 3 h operation
- Including pictogram kit (arrow down, left, right) acc. to ISO 7010
- Environmentally-friendly due to modern lithium ion technology
- Low operating costs via low connected load
- Minimum maintenance effort and increased safety via use of LEDs with high service life (50,000 hours)
- Optimal recognition via bright pictogram with high uniformity $L_{\min}/L_{\max} > 0.6$
- Photometric data according to EN 1838 and ISO 30061
- Simple fault analysis and status display via bicolor LED and testing button
- 1 minute switch-back delay after mains return (according to DIN VDE 0100-718)

GuideLed 10611 AT



GuideLed 10621 AT



GuideLed 10625 AT

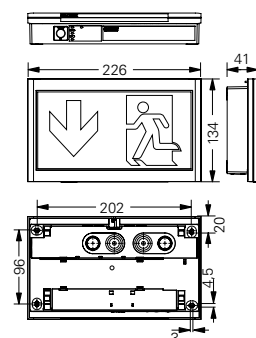


Viewing distance	20 m
Luminous flux Φ_E/Φ_{nom} at end of rated operating time	80 % at 1 h; 80 % at 2 h; 75 % at 3 h
Housing material	Polycarbonate
Weight	0.64 kg (10611 AT) 0.70 kg (10621 AT) 0.71 kg (10625 AT)
Housing colour	Light grey RAL 7035
Type of mounting	Insulation class II (protective earth required)
Terminals	Through-wiring from mains (L, L', N, PE) to 2.5 mm ²
Connection voltage	220- 240 V, 50 Hz
Power consumption mains operation (apparent power/effective power)	3.8 VA / 3.3 W 10611 4.0 VA / 3.6 W 10621/10625
Permissible ambient temperature	Maintained mode -5 °C to +30 °C Non-maintained mode 0 °C to +35 °C
Battery	Lithium ion 3.7 V/2000 mAh with multiple protective circuit
Light source	LED strip

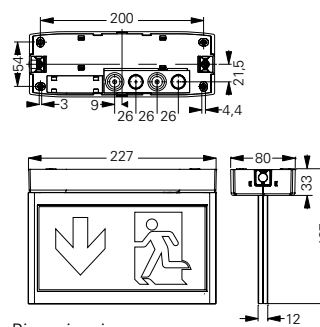
Ordering details

Type	Scope of supply	Order No
GuideLed 10611 AT	GuideLed 10611 1-3h/D AT-Set-e for wall mounting, including LED-supply and pictogram kit (LED pictogram + ISO arrow down, left, right), 20 m	40071353575
GuideLed 10621 AT	GuideLed 10621 1-3h/D AT-Set-e for ceiling mounting, including LED-supply and pictogram kit (LED pictogram + ISO arrow down, left, right + blind), 20 m	40071353576
GuideLed 10625 AT	GuideLed 10625 1-3h/D AT-Set-e for rope suspension, including LED-supply and pictogram kit (LED pictogram + ISO arrow down, left, right + blind), 20 m	40071353577

GuideLed 10611 AT

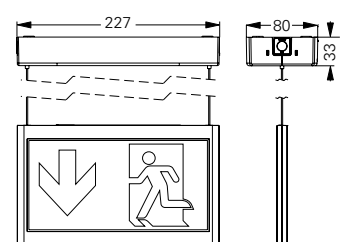


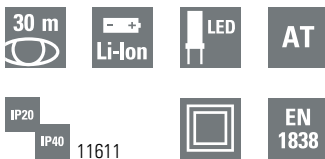
GuideLed 10621 AT



Dimensions in mm

GuideLed 10625 AT





GuideLed 11611, 11621, 11625 AT

- LED self contained luminaire with automatic test for reduced inspection effort
- Universal use for maintained and non-maintained operation and for 1 h, 2 h or 3 h operation
- Including pictogram kit (arrow down, left, right) acc. to ISO 7010
- Environmentally-friendly due to modern lithium ion technology
- Low operating costs via low connected load
- Minimum maintenance effort and increased safety via use of LEDs with high service life (50,000 hours)
- Optimal recognition via bright pictogram with high uniformity $L_{min}/L_{max} > 0.6$
- Photometric data according to EN 1838 and ISO 30061
- Simple fault analysis and status display via bicolor LED and testing button
- 1 minute switch-back delay after mains return (according to DIN VDE 0100-718)

GuideLed 11611 AT



GuideLed 11621 AT



GuideLed 11625 AT

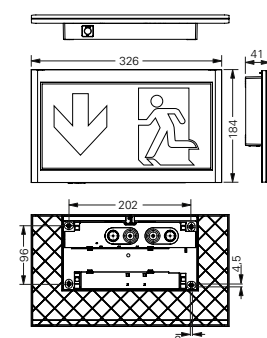


Viewing distance	30 m
Luminous flux Φ_E/Φ_{nom} at end of rated operating time	95 % at 1 h; 95 % at 2 h; 90 % at 3 h 85 % at 1 h; 80 % at 2 h; 60 % at 3 h
Housing material	Polycarbonate
Weight	0.77 kg (11611 AT) 1.04 kg (11621 AT) 1.06 kg (11625 AT)
Housing colour	Light grey RAL 7035
Type of mounting	Insulation class II (protective earth required)
Terminals	Through-wiring from mains (L, L', N, PE) to 2.5 mm ²
Connection voltage	220- 240 V, 50 Hz
Power consumption mains operation (apparent power/effective power)	4.0 VA / 3.6 W 11611 4.5 VA / 4.2 W 11621/11625
Permissible ambient temperature	Maintained mode -5 °C to +30 °C Non-maintained mode 0 °C to +35 °C
Battery	Lithium ion 3.7 V/2000 mAh with multiple protective circuit
Light source	LED strip

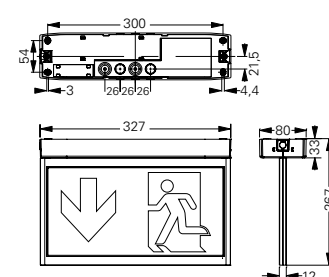
Ordering details

Type	Scope of supply	Order No
GuideLed 11611 AT	GuideLed 11611 1-3h/D AT-Set-e for wall mounting, including LED-supply and pictogram kit (LED pictogram + ISO arrow down, left, right), 30 m	40071353572
GuideLed 11621 AT	GuideLed 11621 1-3h/D AT-Set-e for ceiling mounting, including LED-supply and pictogram kit (LED pictogram + ISO arrow down, left, right + blind), 30 m	40071353578
GuideLed 11625 AT	GuideLed 11625 1-3h/D AT-Set-e for rope suspension, including LED-supply and pictogram kit (LED pictogram + ISO arrow down, left, right + blind), 30 m	40071353579

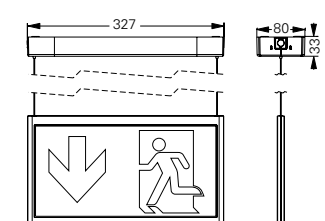
GuideLed 11611 AT



GuideLed 11621 AT



GuideLed 11625 AT



Dimensions in mm

Eaton is dedicated to ensuring that reliable, efficient and safe power is available when it's needed most. With unparalleled knowledge of electrical power management across industries, experts at Eaton deliver customized, integrated solutions to solve our customers' most critical challenges.

Our focus is on delivering the right solution for the application. But, decision makers demand more than just innovative products. They turn to Eaton for an unwavering commitment to personal support that makes customer success a top priority. For more information, visit www.eaton.com/electrical.

To find your contact person, visit www.ceag.de/en.

Eaton Industries Manufacturing GmbH

Electrical Sector EMEA
Route de la Longeraie 7
1110 Morges, Switzerland
www.eaton.eu

CEAG Notlichtsysteme GmbH

Senator-Schwartz-Ring 26
59494 Soest, Germany
Phone: +49 (0) 2921 69-870
Fax: +49 (0) 2921 69-617
E-Mail: info-n@eaton.com
Web: www.ceag.de

Changes to the products, to the information contained in this document, and to prices are reserved; so are errors and omissions. Only order confirmations and technical documentation by Eaton is binding. Photos and pictures also do not warrant a specific layout or functionality. Their use in whatever form is subject to prior approval by Eaton. The same applies to Trademarks (especially Eaton, Moeller, and Cutler-Hammer).

© 2015 Eaton
All Rights Reserved
Printed in Germany
Publication No. CA451007EN
Order No. 40071860158
X.X/06.15/XX

Eaton is a registered trademark.

All other trademarks are property of their respective owners.



Powering Business Worldwide